

MELSOFT EM Motion SDK

Installation Instructions

Before Using the Product

Please read this document before use. Keep the document in a safe place for future reference. Make sure that the end users read the document.

⚠ Notice

- Reprinting or reproducing the part or all of the contents of this document in any form for any purpose without the permission of Mitsubishi Electric Corporation is strictly forbidden.
- Although we have made the utmost effort to follow the revisions of the software and hardware, in some cases, unsynchronized matter may occur.
- The information in this document may be subject to change without notice.

Packaging List

Model name	Product name	Quantity
SW1DND-EMMSDK-B (Japanese version package)	MELSOFT EM Motion SDK DVD-ROM [Packaging software] • Motion Test Tool • MR Configurator2 • Motion API • Motion Control Board Device Driver	1
(Standard license product)		
	Installation instructions	English (This document) 1 Japanese 1
	End-user software license agreement	1
	Software registration notice	1
	License certificate	English 1 Japanese 1

■ Acknowledgements

- We do not guarantee those commercially available Microsoft® Windows® Operating System products that are introduced in this manual.
- This software's copyright is owned by Mitsubishi Electric Corporation.
- We do not take any responsibilities for the consequences of operating this product (including manual).

Operating Environment

Item	Contents	
Personal computer	A personal computer on which Microsoft® Windows® operates	
CPU	Windows 11	2 or more cores on a compatible 64-bit processor or System on a Chip (SoC)
	Windows 10	Intel® Core™ 2 Duo Processor 2 GHz or more recommended
Required memory	Windows 11	Recommended 4GB or more
	Windows 10	64-bit OS: Recommended 2GB or more 32-bit OS: Recommended 1GB or more
Available hard disk capacity	3GB or more	
Disk drive	DVD-ROM supported disk drive	
Monitor	Resolution 1024 × 768 pixels or higher	
OS (English version/Japanese version)	• Windows 11 (Pro, Enterprise, IoT Enterprise) • Windows 10 version 1607 or later (Pro, Enterprise, IoT Enterprise 2016 LTSC) (Note-1)	
Communication interface	PCI Express® BUS, Ethernet® port	

(Note-1): 32-bit edition is not supported.

- When Motion Test Tool (including MR Configurator2) is not installed, it is not necessary to enable .NET Framework3.5 (including .NET2.0 and 3.0).
- The following functions cannot be used. This product may not perform properly, when these functions are used.
 - Activating the application with Windows® compatible mode.
 - Simplified user switch-over
 - Remote desktop
 - Windows XP Mode
 - Font sizes other than small font sizes (Advanced setting of Display Properties)
 - DPI setting other than 100%
(set the size of text and illustration other than [smaller-100%])
 - Windows Touch or Touch
 - Modern UI
 - Client Hyper-V
 - Tablet Mode
 - Virtual desktop
 - High Contrast Mode
 - Unified Write Filter
 - Text cursor indicator
- Use the product as a user having the Administrator authority.
- The screens of this product may not perform properly when multi-display is set on Display Properties.
- The operations on the screen of this product may not be executed properly when the screen resolution is changed while the product is being activated.
- If the anti-virus software is enabled, there is a possibility that PCI Express® connection does not work properly. Please update the anti-virus software or apply the hotfix to the anti-virus software.

Installation

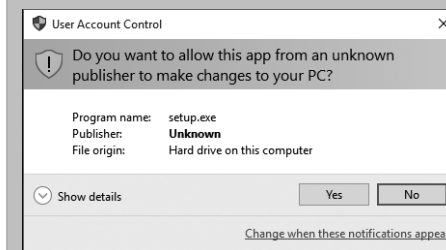
■ Confirm before installation

- Log on to the personal computer as a user having the Administrator authority.
- Close all the applications running under Microsoft® Windows® Operating System before installation. If the product is installed while other applications are running, it may not operate normally.
- Install this product before connecting a personal computer and a motion control board via PCI Express® BUS interface or Ethernet® interface.
- When using antivirus or security software, the warning appears and you may not be able to install. Deactivate temporarily antivirus or security software before installation.
- If you upgrade Microsoft® Windows® Operating System after installing the product, it may not operate normally.
- Disable Fast Startup before mounting a motion control board. If you shut down the personal computer and mount or remove a motion control board while Fast Startup is enabled, the personal computer may not start up normally the next time.
- Install this product to a folder to which the administrator authority is given. The default installation folder is recommended to enhance the security.

1. Insert the MELSOFT EM Motion SDK DVD-ROM to the DVD-ROM drive.
Double-click the "setup.exe" on the DVD-ROM.
2. Select or enter the necessary information by following the on-screen instructions. (Note-1)
(Note-1): Product ID is written on the "License certificate" included with the product. Enter the 12-digit number divided into 3 and 9digits.

■ Precautions

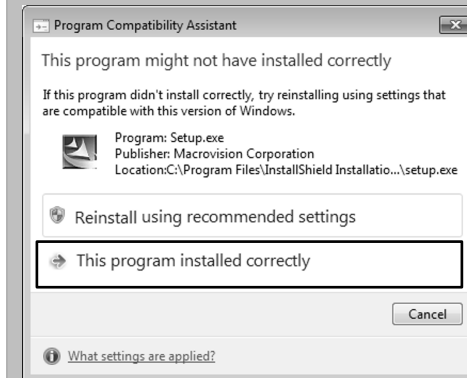
- The User Account Control screen appears if user account control is enabled. Click "Yes".



1. Select "Yes".

- If the device driver is not installed, connection may be partly interrupted. In this case, reinstall EM Motion SDK.

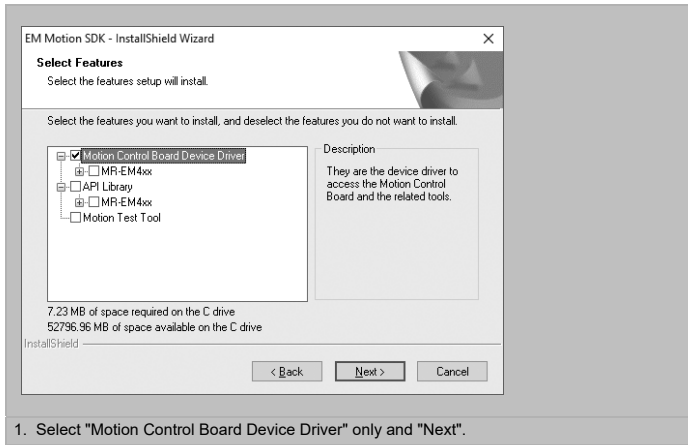
- If an overwrite install has been done to upgrade the version of MELSOFT EM Motion SDK, the following message may be displayed. In this case, select "This program installed correctly".



1. Select "This program installed correctly".

■ Installing the PCI Express device driver

Such as when a motion control board is embedded on control equipment, select only "Motion Control Board Device Driver" in "Select Features" to install PCI Express device driver without Motion Test Tool installation.



Uninstallation

Uninstall MELSOFT EM Motion SDK from the apps & features of Windows®.

Microsoft and Windows are trademarks of the Microsoft group of companies.
Intel, Pentium and Celeron are trademarks of Intel Corporation in the United States and other countries.
PCI Express is either a registered trademark or a trademark of PCI-SIG.
The company names, system names and product names mentioned in this manual are either registered trademarks or trademarks of their respective companies.
In some cases, trademark symbols such as [™] or [®] are not specified in this manual.