

C Controller Interface Module Utility

Installation Instructions

Introduction

Thank you for purchasing C Controller Interface Module Utility. This document explains how to install and uninstall C Controller Interface Module Utility (Note-1). Please read carefully before installing the product to your personal computer.

(Note-1): C Controller Interface Module Utility includes API library for the Q173SCCF, and test tool that can confirm the development of control application and operation for Mitsubishi Electric C Controller Interface Module Q173SCCF.

Product Makeup

Model name	Product name	Quantity
SW1DNC-QSCCF-B	C Controller Interface Module Utility CD-ROM	1
	Installation Instructions (This manual)	1
	Software license agreement	1

Precautions

- We do not guarantee any commercially available Microsoft Windows Operating System products that are introduced in this manual.
- This software's copyright is owned by Mitsubishi Electric Corporation.
- This software requires one license per computer to be purchased. However, only API library can be used for royalty free.
- This product (including manual) can be used under the Software License Agreement only.
- We do not take any responsibilities for the consequences of operating this product (including manual).
- User's Manual in the CD-ROM is a PDF file. To View the PDF file, Adobe® Reader® is required. Download from the Adobe Systems Incorporated website.

⚠ Acknowledgements

- Reprinting or reproducing the part or all the contents of this document in any form for any purpose without the permission of Mitsubishi Electric Corporation is strictly forbidden.
- Although we have made the utmost effort to follow the revisions of the software and hardware, in some cases, unsynchronized matter may occur.
- The information in this document may be subject to change without notice.
- We do not take any responsibility for the virus infection and network failure caused by temporary deactivation of antivirus or security software.

Operating Environment

Item	Contents	
Personal computer main body	Personal computer	Microsoft® Windows® supported personal computer
	OS	Microsoft Windows 10 English version (64-bit/32-bit) Microsoft Windows 8.1 English version (64-bit/32-bit) Microsoft Windows 8 English version (64-bit/32-bit) Microsoft Windows 7 English version (64-bit/32-bit) [Service Pack 1] Microsoft Windows Vista® English version (32-bit) [Service Pack 2] Microsoft Windows XP® English version (32-bit) [Service Pack 3]
	CPU	Desktop PC: Intel® Celeron® Processor 2.8GHz or higher Laptop PC : Intel Pentium® M Processor 1.7GHz or higher
	Required memory	1GB or more recommended (For 32-bit edition) 2GB or more recommended (For 64-bit edition)
Available hard disk space	When installing C Controller Interface Module Utility: Available hard disk space: 1GB or more When operating C Controller Interface Module Utility: Available virtual memory space: 512MB or more	
Disk drive	CD-ROM supported disk drive	
Monitor	Resolution 1024 x 768 pixels or higher	
Communication interfaces	USB port	
API library	C Controller Module : Q24DHCCPU-V Operating system : VxWorks 6.8.1 Programming development environment: CW Workbench, Wind River Workbench 3.2	

Precautions

- (1) The following functions cannot be used. This product may not perform properly when these functions are used.
- Activating the application with Windows compatible mode
 - Simplified user switch-over
 - Remote desktop
 - Large fonts (Detail settings of screen property)
 - DPI setting other than that of the normal size (Detail settings of screen property)
 - Windows XP Mode
 - Windows Touch or Touch
 - Modern UI Style
 - Client Hyper-V

Installation

Install C Controller Interface Module Utility to a personal computer.

Confirm before installation

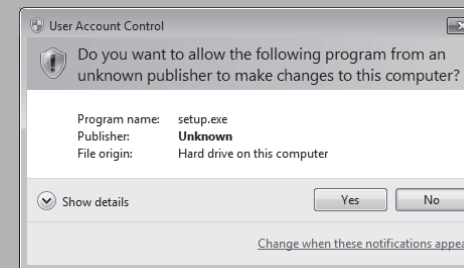
- Log on to a personal computer as a user having an attribute of "Administrator" (Computer administration).
- Terminate all the applications running under Microsoft Windows Operating System before installation.
- If you upgrade Microsoft Windows Operating System after installing this product, it may not operate normally.
- Install this product before connecting a personal computer and a USB interface.
- When using antivirus or security software, a warning appears and you may not be able to install. Deactivate temporarily antivirus or security software before installation.

- Insert the CD-ROM to the CD-ROM drive. Double-click "Setup.exe" (Otherwise, it is displayed as "setup".) in the CD-ROM.
- Following the instructions on the screen, select or enter the necessary information.

Precautions

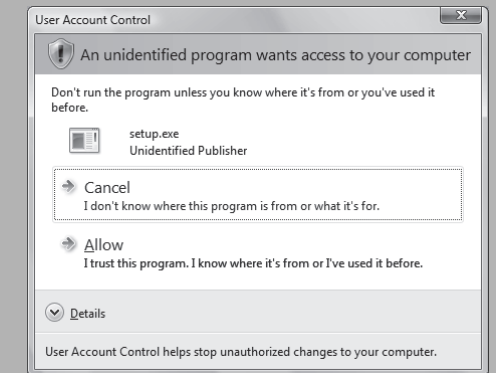
- When using Windows 10/Windows 8.1/Windows 8/Windows 7/Windows Vista, the User Account Control screen appears if user account control is enabled. Click "Yes" or "Allow".

When using Windows 10/Windows 8.1/Windows 8/Windows 7



- Select "Yes".

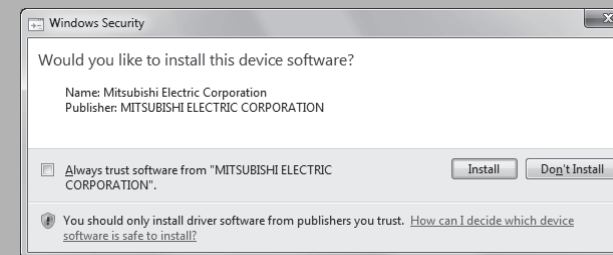
When using Windows Vista



- Select "Allow".

- If the following messages are displayed several times before completing the installation of this product, the USB device driver must be installed.

When using Windows 10/Windows 8.1/Windows 8/Windows 7/Windows Vista



- Select "Install" and install the device driver.

When using Windows XP

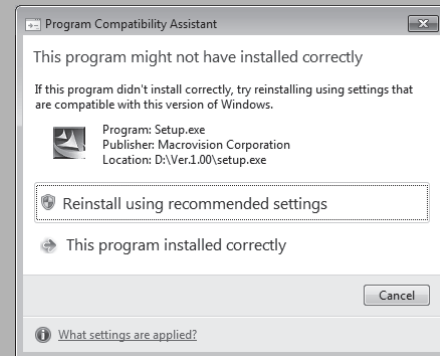


- Select "Continue Anyway" and install the device driver.

Continue to the Backside

- If an overwrite install has been done to upgrade the version of C Controller Interface Module Utility when using Windows 10/Windows 8.1/Windows 8/Windows 7/Windows Vista, the following message may be displayed. In this case, select "This program installed correctly".

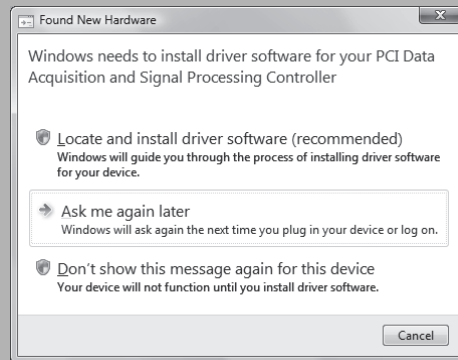
When using Windows 10/Windows 8.1/ Windows 8/Windows 7/Windows Vista



1. Select "This program installed correctly".

- The "Found New Hardware Wizard" may temporarily appear during the installation. This occurs for requesting a device registration to Windows, and this screen will disappear automatically after the completion of the registration processing of Windows. At this time, never execute any operation with the "Found New Hardware Wizard".
- When using Windows Vista /Windows XP, the "Found New Hardware Wizard" may appear, if the Q173SCCF and personal computer (connected using a USB connection) are turned on without installing C Controller Interface Module Utility. In this case, select "Cancel".

When using Windows Vista



1. Select "Cancel".

When using Windows XP

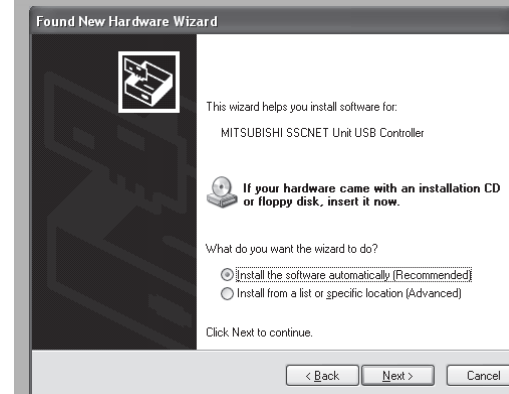


1. Select "Cancel".

Installing the USB device driver

When using Windows XP, in order to connect with a Q173SCCF via USB interface, the USB device driver needs to be installed. When using Windows 10/Windows 8.1/Windows 8/Windows 7/Windows Vista the USB device driver is automatically installed.

When using Windows XP



1. The "Found New Hardware Wizard" appears when the Q173SCCF and personal computer are connected using a USB connection for the first time only. The same screen appears when the USB port to be connected is changed.
2. The "Welcome to the Found New Hardware Wizard" dialog may appear. In this case, select "No, not this time".
3. The "This wizard helps you install software for." dialog screen appears. Select "Install the software automatically [Recommended]".
4. The dialog of Windows Logo Test appears. The installing of the USB device driver completes by clicking "Continue Anyway".

Uninstallation

Uninstall C Controller Interface Module Utility from a personal computer.

1. Execute the C Controller Interface Module Utility uninstallation from the control panel of Windows.

Microsoft, Windows, Windows Vista, and Windows XP are either registered trademarks or trademarks of Microsoft Corporation in the United States and/or other countries.
Celeron, Intel, and Pentium are either registered trademarks or trademarks of Intel Corporation in the United States and/or other countries.
Adobe, Acrobat, and Reader are either a registered trademark or trademark of Adobe Systems Incorporated in the United States and/or other countries.
VxWorks and Wind River are registered trademarks or trademarks of Wind River Systems, Inc.
The company names, system names and product names mentioned in this manual are either registered trademarks or trademarks of their respective companies.
In some cases, trademark symbols such as [™] or [®] are not specified in this manual.