


## Before Using the Product

Before using the product, please read this manual. Make sure that the end users read this manual and then keep the manual in a safe place for future reference.

### WARNING

- Download the "Safety Guidelines (IB-0800525)" from the two-dimensional code or URL below and read it before using the product.  
The Safety Guidelines includes the important information for users to avoid accidents causing death or injury.

The symbol "" on the rating plate of the product indicates that downloading the Safety Guidelines from the two-dimensional code or URL is required.

- Two-dimensional code



- URL  
[www.MitsubishiElectric.com/fa/ref/ref.html?k=plc&manual=r\\_safety\\_guidelines\\_eng](http://www.MitsubishiElectric.com/fa/ref/ref.html?k=plc&manual=r_safety_guidelines_eng)

The print book version is available for those who cannot download the Safety Guidelines. Please consult your local Mitsubishi Electric representative.

### ■ Relevant manuals

Before using the product, please read the "Safety Guidelines (IB-0800525)", especially the following sections.

- SAFETY PRECAUTIONS
- CONDITIONS OF USE FOR THE PRODUCT
- EMC AND LOW VOLTAGE DIRECTIVES
- WARRANTY

For the product information, refer to the following.

Contents	Manual name [manual number]
Detailed information on the product	MELSEC iQ-R I/O Module (With Safety Functions) User's Manual [SH-082639ENG]

Please develop familiarity with the functions and performance of the product to handle the product correctly.

### ■ Packing list

Check that the following items are included in the package of the product.

Item	Quantity
Module	1
Before Using the Product (this manual)	1
Compliance with the Machinery Directive (2006/42/EC) and UL Standards	1

### ■ This product

This product has Hardware Fault Tolerance (HFT) of 1, and complies with following requirements of international safety standards: SIL3 (IEC 61508: 2010), Category 4 PL e (EN ISO 13849-1: 2015).

### ■ Operating ambient temperature

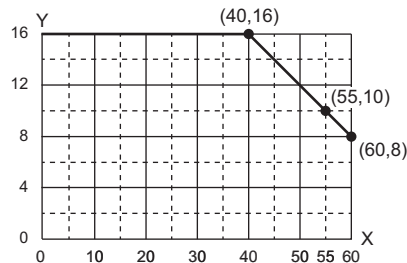
Use the product within the following range.

- 0 to 55°C (when an extended temperature range base unit is not used)
- 0 to 60°C (when an extended temperature range base unit is used)

### ■ Rated load voltage, maximum load current

Item	Specifications
Rated load voltage	24VDC
Maximum load current*1	2A/point, 16A/common

- \*1 When the common current exceeds 8A, connect two +24V terminals and two 24G terminals.
- Derating chart



X: Ambient temperature (°C)\*2

Y: Common current (A/common)

\*2 If the ambient temperature exceeds 55°C, the module can be used only when it is mounted on the extended temperature range base unit.

### ■ Information and services

For further information and services, please consult your local Mitsubishi Electric representative.