

Method of installing the PX Developer/ PX Developer Monitor Tool

Thank you for purchasing the engineering software, MELSOFT series PX Developer/PX Developer Monitor Tool.

Please read this document before use. Keep the document in a safe place for future reference. Make sure that the end users read the document.

■ Relevant manuals

For the product information, refer to the following.

Before using the product, please read especially the following sections.

Description	Manual name [manual number]
SAFETY PRECAUTIONS	PX Developer Version 1 Operating Manual (Programming Tool) [SH-080369E]
CONDITIONS OF USE FOR THE PRODUCT	
Operating Environment	PX Developer Version 1 Operating Manual (Monitor Tool) [SH-080370E]

The manual (PDF data) for this product is stored in the "Manual" folder on the accompanying CD-ROM.

- Refer to the following manuals when necessary.

Description	Manual name [manual number]
Precautions for installation	GX Works2 Installation Instructions [BCN-P5999-0944]
	GX Developer Version 8 Operating Manual (Startup) [SH-080372E]

- Refer to the following technical bulletin for the OS to be installed.

Description	Technical bulletin name (technical bulletin number)
Precautions for installation	Installation procedure, precautions, and corrective actions for problems regarding Windows Vista-based personal computer (FA-A-0008)
	Products compatible with Windows 7 and precautions for installation (FA-A-0091)
	Products that we have confirmed the operation on Windows [®] 8 and Windows [®] 8.1, and precautions for installation (FA-A-0153)
	Products that we have confirmed the operation on Windows 10, and precautions for installation (FA-A-0207)

Please develop familiarity with the functions and performance of the product to handle the product correctly.

■ Confirm before installation

- For PX Developer (SW1D5C-FBDQ-E), Programming Tool and Monitor Tool are installed.
- For PX Developer Monitor Tool (SW1DNC-FBDQMON-E), only Monitor Tool is installed.
- PX Developer and PX Developer Monitor Tool cannot be installed on the same personal computer.
- Log on to the personal computer as an administrator.
- Close all running applications before installation. If the product is installed while other applications are running, it may not operate normally.

■ Installation

This product can be used after it has been installed in the personal computer according to the following procedure.

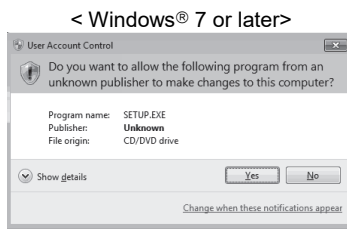
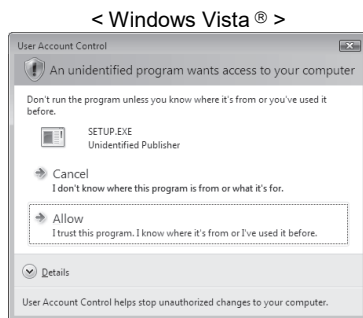
1. Insert the product CD-ROM to the CD-ROM drive. Double-click "setup.exe" in the CD-ROM.
2. Select or enter the necessary information by following the on-screen instructions.

Product ID is written on the "License certificate" included in this product. Enter the 12-digit number divided into 3 and 9 digits.

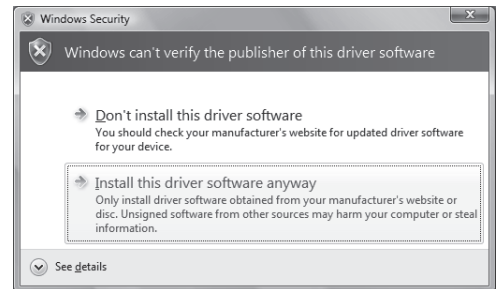
If the confirmation screen appears during the installation, continue the installation according to the instruction on the screen.

- If any of the following screens appears, perform the operation instructed for respective screens.

(Screen 1) Select "Allow" or "Yes".

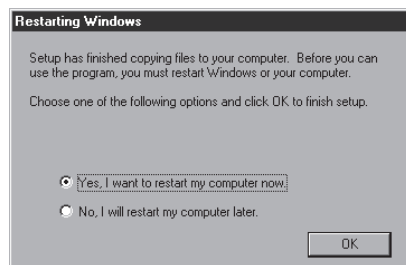


(Screen 2) Select "Install this driver software anyway".

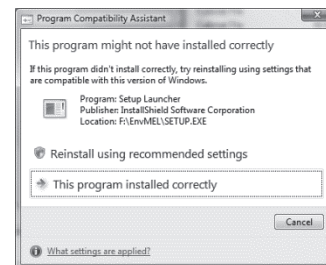


- The following screens may appear after the installation is completed.

(Screen 3) Restart the personal computer according to the instruction on the screen.



(Screen 4) Select "This program installed correctly". Do not choose "Reinstall using recommended settings", because the installer installs an incorrect module.



- The following screen will appear when the product is installed for the first time or the USB Driver is installed under Windows XP®. In this case, click "Continue Anyway" and continue the installation. (We have checked the operation and assured that the system operates without any problem by performing this procedure.)

(When installing the product for the first time)



(When installing the USB Driver)



■ Uninstallation

Uninstall the product from the control panel of Windows.

- If the dialog box which confirms deletion of common file appears during the uninstall procedure, click the "No To All" button.

■ Trademarks

Microsoft, Windows, Windows Vista, and Windows XP are either registered trademarks or trademarks of Microsoft Corporation in the United States and/or other countries.

The company names, system names and product names mentioned in this manual are either registered trademarks or trademarks of their respective companies.

In some cases, trademark symbols such as '™' or '®' are not specified in this manual.