

# Method of installing the MELSOFT Series



Thank you for purchasing the engineering software, MELSOFT series.

Please read this document before use. Keep the document in a safe place for future reference. Make sure that the end users read the document.

## ■ Relevant manuals

Information on this product is described in the manual stored in the "Manual" folder on the product CD. Before using the product, please read especially the following sections in the manual.

- SAFETY PRECAUTIONS
- CONDITIONS OF USE FOR THE PRODUCT
- Operating Environment

Refer to the following technical bulletin for the OS to be installed.

Description	Technical bulletin name (technical bulletin number)
Precautions for installation	Installation procedure, precautions, and corrective actions for problems regarding Windows Vista-based personal computer (FA-A-0008)
	Products compatible with Windows 7 and precautions for installation (FA-A-0091)
	Products that we have confirmed the operation on Windows <sup>®</sup> 8 and Windows <sup>®</sup> 8.1, and precautions for installation (FA-A-0153)
	Products that we have confirmed the operation on Windows 10, and precautions for installation (FA-A-0207)

Please develop familiarity with the functions and performance of the product to handle the product correctly.

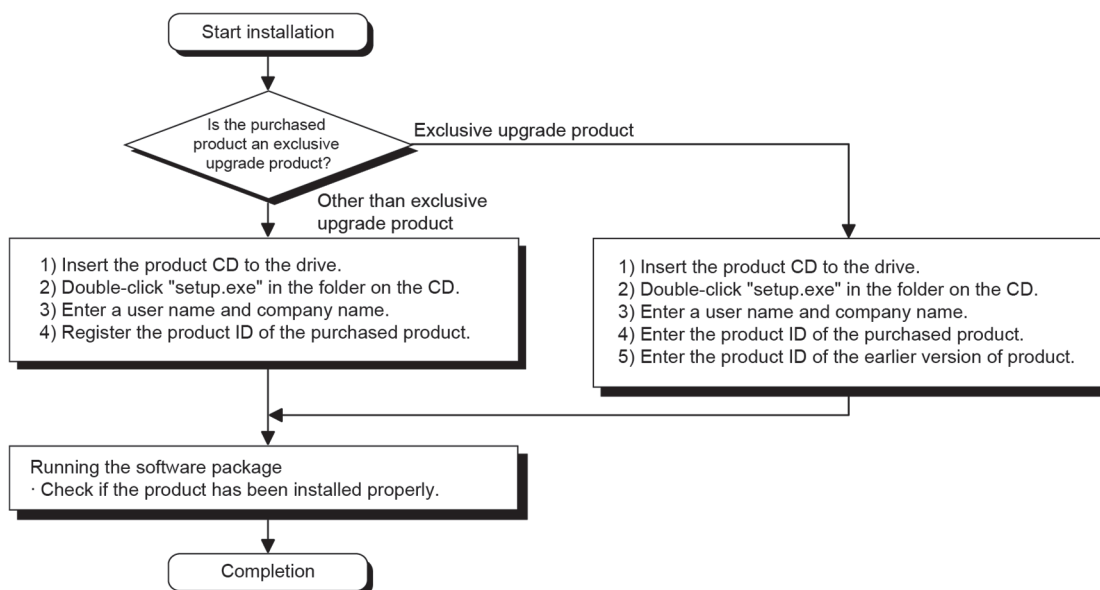
Adobe<sup>®</sup> Reader<sup>®</sup> is required in order to read the manual PDF data.

Adobe Reader can be downloaded from the Adobe Systems Incorporated web site.

## ■ Confirm before installation

- Make sure to close all running applications before installation.  
Installation under running another application may cause abnormal operation of the product.
- When installing multiple products, install the GX Developer first.
- Log on to the personal computer as an administrator.
- Along with this document, refer to the manual on the product CD to learn about the operating environment and the procedures for installing and uninstalling.
- The supported operating systems differ by each product; therefore, some MELSOFT products cannot be used together.

## ■ Installation procedure

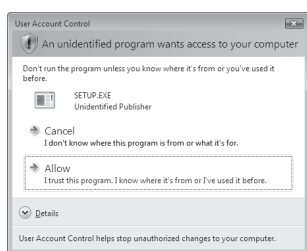


If the confirmation screen appears during the installation, continue the installation according to the instruction on the screen.

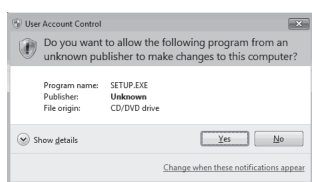
- If any of the following screens appears, perform the operation instructed for respective screens.

(Screen 1) Select "Allow" or "Yes".

< Windows Vista® >

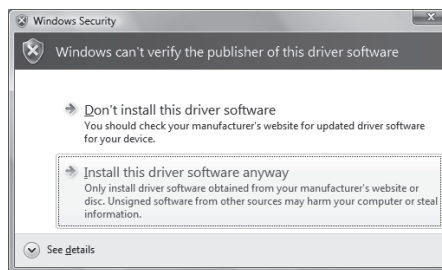


< Windows® 7 or later>



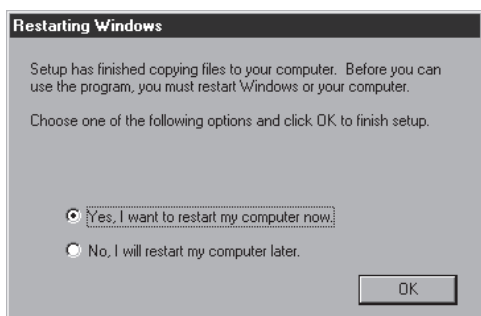
Although the displayed screen may differ for some operating systems, the operation is the same.

(Screen 2) Select "Install this driver software anyway".

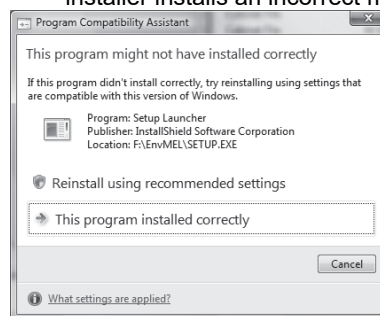


- The following screens may appear after the installation is completed.

(Screen 3) Restart the personal computer according to the instruction on the screen.



(Screen 4) Select "This program installed correctly". Do not choose "Reinstall using recommended settings", because the installer installs an incorrect module.

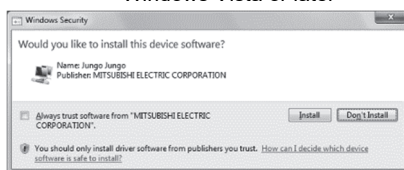


- If you install this product while running the PWS (Personal Web Server) or resident software such as antivirus software, [ComponentMoveData Error Information] will be displayed and the product may not be installed properly. In case of the error, close the software and restart the personal computer, and then try installing the product again. If you stop antivirus software, a risk of virus infection will increase on the personal computer. Restart the antivirus software immediately after installation.
- The following screen will appear when the product is installed for the first time or the USB Driver is installed. In this case, click "Continue Anyway" and continue the installation. (We have checked the operation and assured that the system operates without any problem by performing this procedure.)

(When installing the product for the first time)  
Windows XP



(When installing the product for the first time)  
Windows Vista or later



Although the displayed screen may differ for some operating systems, the operation is the same.

(When installing the USB Driver)  
Windows XP



## ■ Uninstallation procedure

Uninstall the product from the control panel of Windows.

- If the dialog box which confirms deletion of common file appears during the uninstall procedure, click the "No To All" button.

## ■ Trademarks

Microsoft, Windows, Windows Vista, and Windows XP are trademarks of the Microsoft group of companies. Adobe and Reader are either registered trademarks or trademarks of Adobe Systems Incorporated in the United States and/or other countries

The company names, system names and product names mentioned in this manual are either registered trademarks or trademarks of their respective companies.

In some cases, trademark symbols such as '™' or '®' are not specified in this manual.

**MITSUBISHI ELECTRIC CORPORATION**

HEAD OFFICE : TOKYO BUILDING, 2-7-3 MARUNOUCHI, CHIYODA-KU, TOKYO 100-8310, JAPAN  
NAGOYA WORKS : 1-14, YADA-MINAMI 5-CHOME, HIGASHI-KU, NAGOYA, JAPAN