

FR Configurator SW3 Parameter File Editor INSTRUCTION MANUAL

OUTLINE OF EDITING

1

**MENU AND SETTING
WINDOW**

2

**PARAMETER EDITING
EXAMPLE**

3

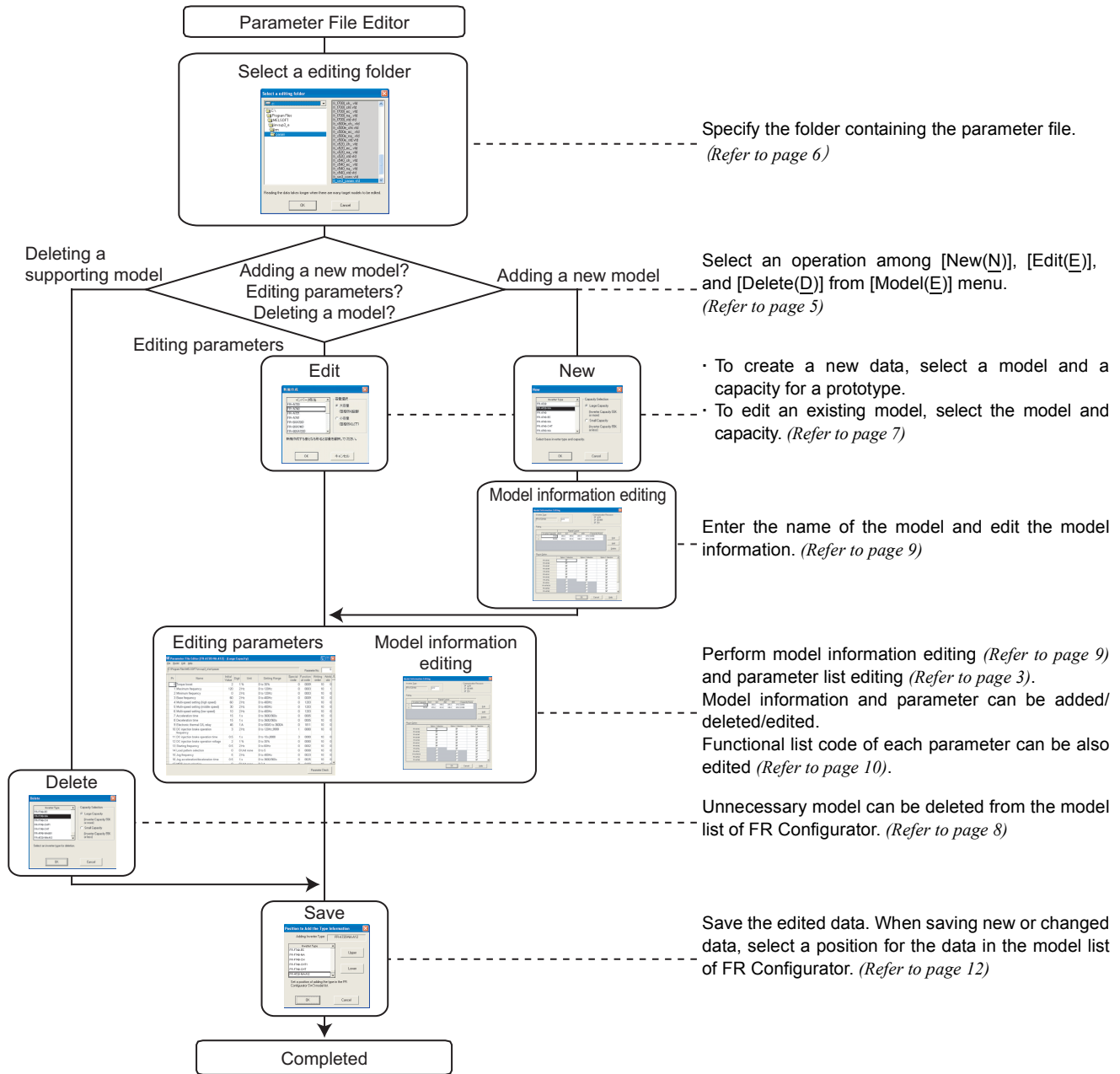
CONTENTS

1	OUTLINE OF EDITING	2
2	MENU AND SETTING WINDOW	3
2.1	Main window and parameter setting items.....	3
2.2	Menu List	5
2.3	"Select a editing folder" window	6
2.4	"New" and "Edit" windows	7
2.5	"Delete" window.....	8
2.6	"Model Information Editing" window and setting items	9
2.7	"Functional List Code" window and setting items	10
2.8	"Position to Add the Type Information" window	12
3	PARAMETER EDITING EXAMPLE	13
3.1	Adding a new model	13
3.2	Editing and changing an existing model	15
3.3	Deleting a registered model	17

1 OUTLINE OF EDITING

This Parameter File Editor is a dedicated software to add/change/delete supporting models in FR Configurator SW3 and to add/change/delete parameters displayed in FR Configurator SW3. By using this software, version upgrade of an inverter and special inverters can be supported by FR Configurator SW3.

Please note in advance that Mitsubishi does not offer any guarantee regarding Parameter File Editor.



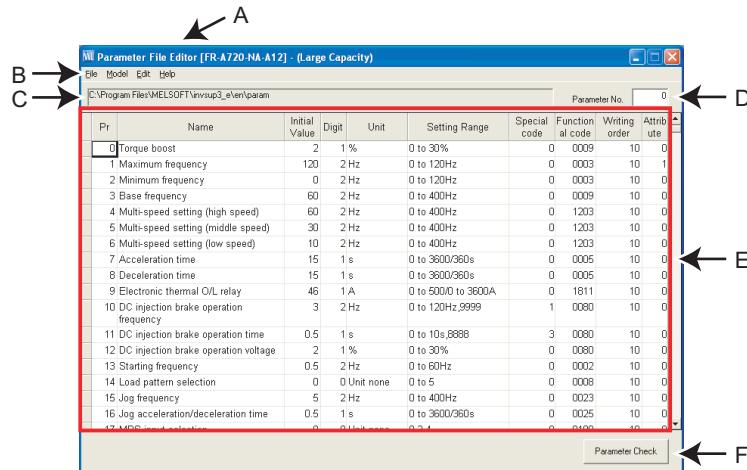
REMARKS

- If you want to edit and share the parameter data stored in the system area, copy the data to a location where other users also have file access, and edit the copied data. By overwriting the system area data with the data edited by other user, the edited parameter data can be shared.
- If you want to directly edit the parameter data stored in system area while using Windows Vista, log on as an administrator and start the software.
- At the automatic recognition of FR Configurator, the added model using this software will be recognized as a standard inverter. After the recognition of the new model, change the model setting manually.

2 MENU AND SETTING WINDOW

2.1 Main window and parameter setting items

Parameter list can be edited from the main window. From the menu bar, editing folder selection window, model addition window, model information window and more are displayed.



No.	Name	Function and Description
A	Title bar	Model name and capacity is displayed next to "Parameter File Editor" on the title bar.
B	Menu bar	Windows of different functions can be displayed from the menu. "Select a editing folder" window (Refer to page 6), "New" window (Refer to page 7), and "Model Information Editing" window (Refer to page 9) can be displayed from the menu.
C	Editing folder	Displays the folder being edited.
D	Parameter No.	Displays the selected parameter number. If you enter a parameter number in this field, the cursor moves to the parameter of the entered number.
E	Parameter list	The area for parameters editing. Parameters can be added, edited, or deleted.
F	Parameter check	Click to sort the parameter numbers, and to check for the each item for duplication or an error. Parameter with an error is displayed in red.



NOTE

For the models with parameters changed or deleted, Setting Wizard of FR Configurator may not behave properly. Check the result of the Setting Wizard, and make settings manually from a parameter list if necessary.

7 Main window and parameter setting items

●Setting items on the parameter list

Pr	Name	Initial Value	Digit	Unit	Setting Range	Special code	Functional code	Writing order	Attribute
0	Torque boost	2	1	%	0 to 30%	0	0009	10	0
1	Maximum frequency	120	2	Hz	0 to 120Hz	0	0003	10	1
2	Minimum frequency	0	2	Hz	0 to 120Hz	0	0003	10	0

No.	Name	Function and Description
A	Pr.	Set the parameter number. Number from 0 to 999 can be entered (except for 902 to 939, which cannot be entered).
B	Name	Set the parameter name. Total of 159 one-byte characters can be entered.
C	Initial Value	Set the initial value. Value from 0 to 65535, up to third decimal place can be entered. (The entered value will be rounded down to the third decimal place.)
D	Digit	Select the significant figures. Value from 0 to 3 can be entered. Example) Set significant figures of "2"(decimal place) for the setting unit of 0.01Hz.
E	Unit	Select the unit of the parameter.
F	Setting Range	Set the setting range of the parameter. Total of 159 one-byte characters can be entered. Setting range for standard models is displayed in the following manners. <ul style="list-style-type: none"> When two or more setting values exist, they are separated by "," (comma). When different setting ranges exist for different capacities, they are separated by "/". When the maximum value differs by the case, the maximum value is displayed as "*****". When setting read-only setting ranges, they are displayed as surrounded by "(" " ")". When not displaying the setting range, "---" or "-" is displayed. A value with special meaning is displayed as 8888 or 9999. (Decided by the inverter side.) (Example) <ul style="list-style-type: none"> Minimum value is 0 and maximum value is 500A for 55k or less, and minimum value is 0 and maximum value is 3600A for 75k or more... 0 to 500/0 to 3600A Minimum value is 0, maximum value is 400Hz, and the function is invalid when 9999..... 0 to 400Hz, 9999 Minimum value is 0 and maximum value is 1000mH(50Ω)... 0 to 1000mH(0 to 50ohm)
G	Special code	Select the parameter writing rule for the setting values of 9999 and 8888. 0: Not specified 1: Only 9999 is valid 2: Only 8888 is valid 3: 8888 and 9999 are both valid
H	Functional code	Categorizing of parameter into each Functional parameter lists is available from "Functional List Code" window. (Hexadecimal codes are used in this column. Codes from 0x0000 to 0xFFFF can be set.) Place the cursor to the row of the parameter, select [Functional List Code...] from [Edit] menu, and from the "Functional List Code" window, select the Functional parameter list category. (Refer to page 10)
I	Writing order	Set the order of parameter batch write. Value from 0 to 20 can be entered. Parameters with smaller value are written faster. When same value is set, writing is performed by the order of parameter value. Set 10 in normal condition. To be written earlier, set a smaller value than 10. To be written later, set a larger value than 10. (Change the writing order only for the special parameter, which affects other parameters and units when they are written (for example, Pr. 21 and Pr. 37.). If the writing order of an existing parameter is changed, the setting values may not be written correctly.)
J	Attribute	Set this field for the parameters which requires special processing. 0 : No action 1 : Parameters which announces re-reading of other parameters at parameter writing. 16 : Read-only parameters 32 : Parameters which does not allow inputting.



REMARKS

The initial value of the following parameters may vary depending on the capacity.

Pr. 0, 7, 8, 9, 12, 44, 56, 557 and 893

(Refer to the Instruction Manual of the each model for details.)

As for these parameters, FR Configurator displays calculated value based on the capacity in the initial value field.

(Note that if the initial value field is blank, FR Configurator also displays blank. Please fill a value in the field, and do not leave the field blank for these parameters.)

2.2 Menu List

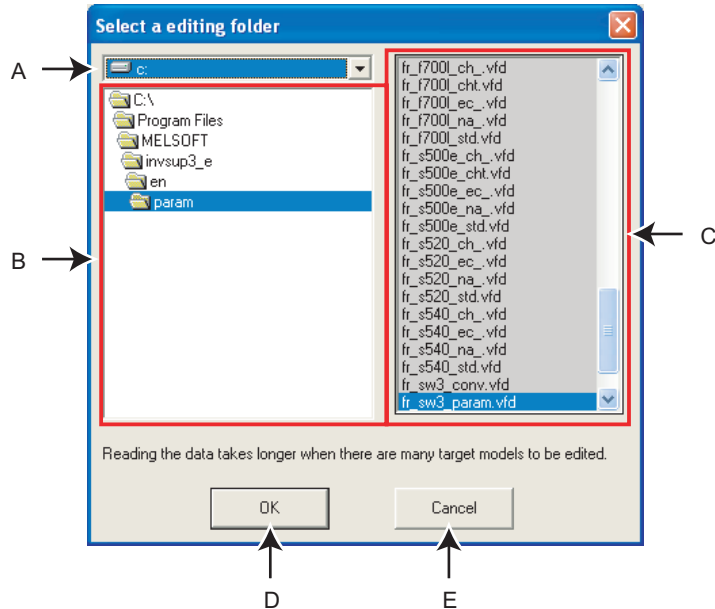
The following functions are available on the menu.

Menu	Pull-down menu	Function and Action	Refer to page
File	Folder...	Menu for specifying the folder storing the parameter data. <i>(Refer to page 6)</i>	6
	Save...	Saves the edited model information and parameter data. Setting of a display position in FR Configurator model list is available. <i>(Refer to page 12)</i>	12
	Import...	Imports the exported data of model information and parameter data. Exported file, which has been created using this Parameter File Editor, can be imported. Extension of import parameter files is *.vf_.	-
	Export...	Exports the model information and parameter data created with this software. The created model information and parameter data can be re-used in a different personal computer. Extension of export parameter files is *.vf_.	-
	Exit	Exits Parameter File Editor. If the edited data is not saved, confirmation dialog appears.	-
Model	New...	Creates new model information and parameter data. Select a prototype model for the new model information and parameter data in the appeared window. <i>(Refer to page 7)</i>	7
	Edit...	Edits an existing model information and parameter data. Select the model for editing in the appeared window. <i>(Refer to page 7)</i>	7
	Delete...	Deletes a model from the FR Configurator model list. Select the model to be deleted in the appeared window. <i>(Refer to page 8)</i>	8
Edit...	Cut	Cuts the selected area, and pastes it to the clipboard. Cell or entire row can be cut.	-
	Copy	Copies the selected area, and pastes it to the clipboard. Cell or entire low can be copied.	-
	Paste	Pastes an item stored in the clipboard. (Items from other applications may not be pasted correctly.)	-
	Add Paste	Inserts a row that has been cut or copied.	-
	Add	Inserts a blank row above the selected row.	-
	Del	Deletes the selected row.	-
	Functional List Code...	Displays the list of the functional list category. Select a category to be displayed in the functional parameter list, and click [OK].	10
Help	Contents	Displays Help window.	-
	About...	Displays the version information.	-

2.3 "Select a editing folder" window

Select [Folder...] from the [File] menu to display the "Select a editing folder" window.

Specify the folder containing the parameter file by selecting the drive first, then the folder. When a folder containing the parameter file is selected, parameter files (*.vfd) in the folder are displayed in the right column.



No.	Name	Function and Description
A	Drive selection	Select a drive containing the parameter file.
B	Folder selection	Select a folder containing the parameter file.
C	File display	Displays parameter files, which are located in the selected folder.
D	OK	Click to start editing a parameter file of the selected folder.
E	Cancel	Closes the window without selecting the folder.

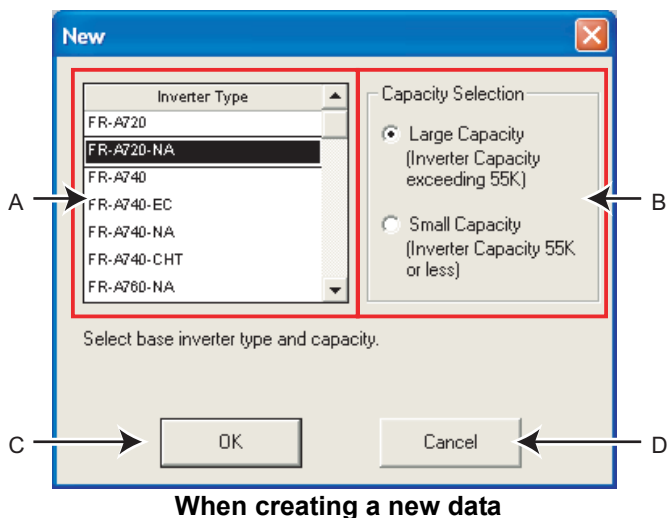


REMARKS

- If the install destination of FR Configurator is not changed, the parameter file is saved in C:\Program Files\MELSOFT\invsup3_e\en\param
- If you want to edit and share the parameter data stored in the system area, copy the data to a location where other users also have file access, and edit the copied data. By overwriting the system area data with the data edited by other user, the edited parameter data can be shared.
- If you want to directly edit the parameter data stored in system area while using Windows Vista, log on as an administrator and start the software.

2.4 "New" and "Edit" windows

- To add a new model, select [New...] from the [Model] menu. Select a prototype model for the new model in the "New" window.
 - To edit an existing model, select [Edit] from the [Model] menu. Select the model in the "Edit" window to edit.
- Select the inverter model name on the left and the capacity on the right, and then click "OK" to proceed to parameter editing and model information editing.



No.	Name	Function and Description
A	Inverter Type	Select the model for editing or for a prototype.
B	Capacity Selection	Select the capacity of the model for editing or for a prototype.
C	OK	Closes the window after reading the parameter information of the selected model.
D	Cancel	Closes the window without selecting the model.

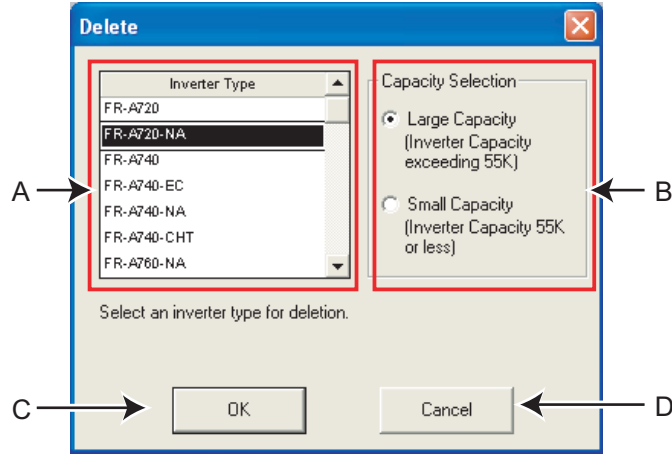


REMARKS

- Standard models in FR Configurator cannot be edited. To edit a standard model, select [New...] on the [Model] menu, and create a new model name, and then edit the data.

2.5 "Delete" window

Select [Delete...] on the [Model] menu to display the "Delete" window. Select a model to be deleted from the model list in FR Configurator, and click [OK] to close the window. Then select [Save...] on the [File] menu, and the selected model will be deleted from the model list of FR Configurator.



No.	Name	Function and Description
A	Inverter Type	Select the model to be deleted.
B	Capacity Selection	Select the capacity of the model to be deleted.
C	OK	Closes the window with selecting the deleting model.
D	Cancel	Closes the window without selecting the model.

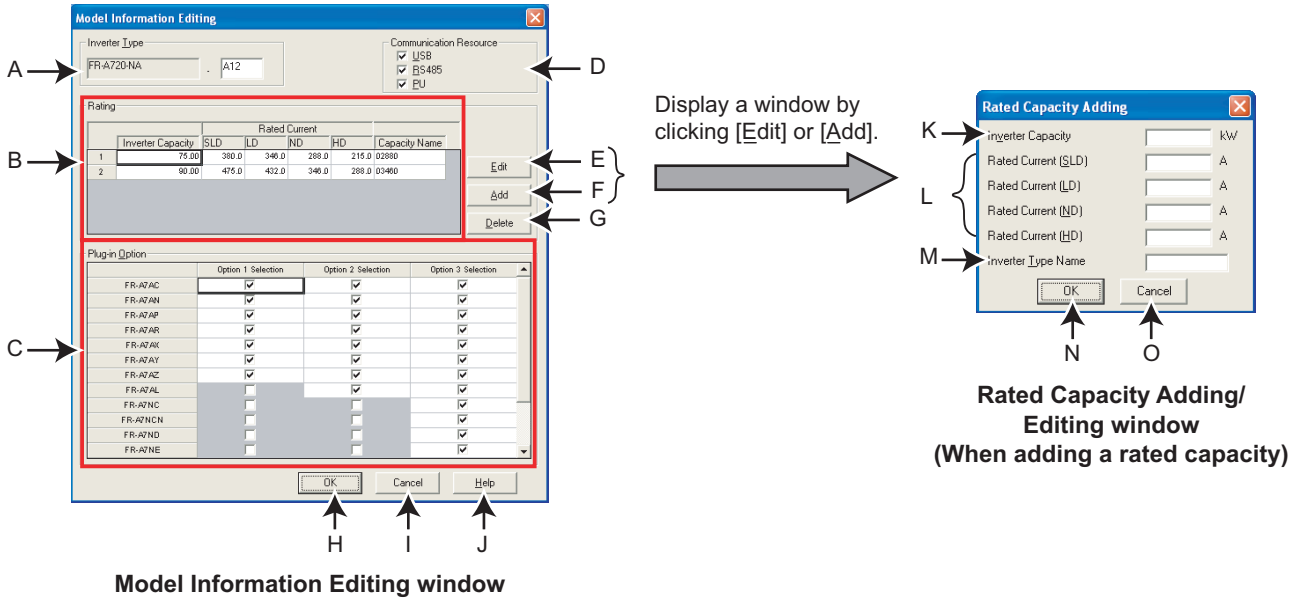


POINT

- Before deleting the data, make sure to backup the folder containing the parameter file. If a model is deleted by mistake, you can overwrite the parameter file using the backup data.

2.6 "Model Information Editing" window and setting items

Select [Model Info...] on the [Edit] menu to display the "Model Information Editing" window. Model name, capacity, rated current, communication resource, and plug-in option can be set. After editing and adding the model information, click [OK].



●Model Information Editing

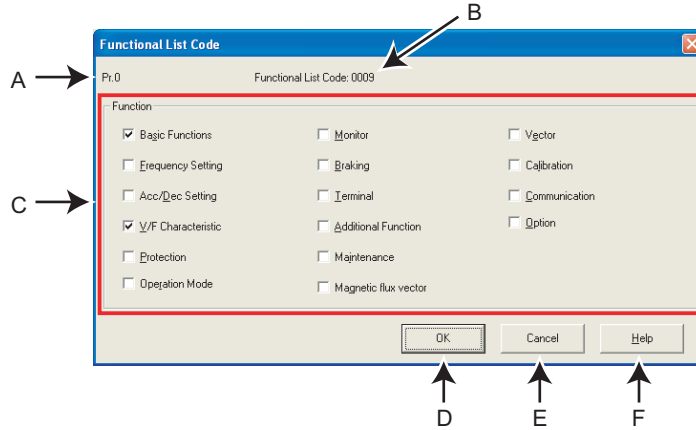
No.	Name	Function and Description
A	Inverter Type	Set the name of the inverter model. After the hyphen, up to three one-byte characters can be entered.
B	Inverter Capacity	Displays the capacity. To edit or add, click [Edit] or [Add].
C	Plug-in Option	Set the available plug-in options of the selected model. Communication options can be set only to "Option 3 Selection".
D	Communication Resource	Set the available communication route of the selected model. At least one communication route must be selected.
E	Edit	Displays the "Inverter Capacity" window for the selected capacity in the inverter capacity table.
F	Add	Displays "Rated Capacity Adding" window. Rated capacity can be added.
G	Delete	Deletes the selected capacity in the inverter capacity table.
H	OK	Closes the window with the valid setting.
I	Cancel	Closes the window without the setting.
J	Help	Displays Help window.

●Rated Capacity Adding and Rated Capacity Editing

No.	Name	Function and Description
K	Inverter Capacity	Set the inverter capacity. One-byte characters can be entered. Smaller capacity: 0.01 to 55.00kW Larger capacity: 55.01 to 630.00kW (The entered value will be rounded down to the third decimal place.)
L	Rated Current (SLD) Rated Current (LD) Rated Current (ND) Rated Current (HD)	Enter the rated current. Smaller capacity: 0.1 to 500.0A Larger capacity: 0.1 to 3600.0A (The entered value will be rounded down to the second decimal place.) When editing a parameter file which will be used outside of Japan, the multiple rated capacity of SLD, LD, ND, and HD can be set.
M	Inverter Type Name	Set the model name of the capacity up to 8 digits in one-byte alphabet and number.
N	OK	Closes the window with the valid setting.
O	Cancel	Closes the window without the setting.

2.7 "Functional List Code" window and setting items

While selecting a parameter in the list, select [Functional List Code...] on the [Edit] menu to display the "Functional List Code" window. Categorizing of the selected parameter into functional list is available. Check the boxes of the each categories which you want to display in the Functional parameter list, and click [OK].



Example of a FR-A700 series inverter

No.	Name	Function and Description
A	Parameter Number	Displays the editing parameter number.
B	Functional List Code	Displays the total hexadecimal code of the selected functional list items. The code displayed here is entered to the "Func. Code" column of the parameter list.
C	Func. Code	Select functional parameter list items.
D	OK	Closes the window with the valid setting.
E	Cancel	Closes the window without the setting.
F	Help	Displays Help window.

●"Functional List Code" setting items

Items on the functional parameter list of FR-A700 series, FR-A701 series

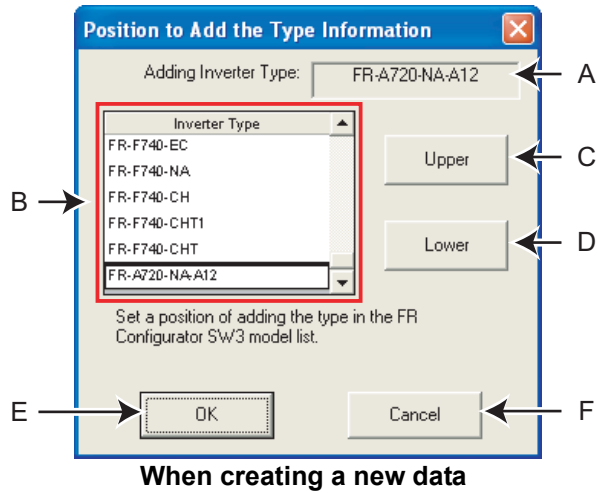
Function	Description
Basic Function	Parameters related to basic functions
Frequency Setting	Parameters related to frequency
Acc/Dec Setting	Parameters related to acceleration/deceleration
V/F Characteristics	Parameters related to V/F characteristics
Protection	Parameters related to the protective function
Operation mode	Parameters related to operation modes
Monitor	Parameters related to the monitoring function
Braking	Parameters related to braking frequency and braking time
Terminal	Parameters related to control circuit terminals
Additional Function	Other parameters
Maintenance	Parameters related to maintenance
Magnetic flux vector	Parameters related to Advanced magnetic flux vector control (General-purpose magnetic flux control)
Vector	Parameters related to vector control
Calibration	Parameters for calibrating terminals FM and AM and set bias/gain of frequency (speed) setting voltage and current
Communication	Parameters related to communication
Option	Parameters related to options

Items on the functional parameter list of FR-D700 series, FR-E700 series, and FR-F700 series

Function	Description
Motor Torque	Parameters related to a motor and torque
Frequency setting	Parameters related to frequency
Acc/Dec Setting	Parameters related to acceleration/deceleration
Protection	Parameters related to the protective function
Monitor	Parameters related to the monitoring function
Braking	Parameters related to braking frequency and braking time
Terminal Alloc	Parameters related to control circuit terminals
Magnetic flux vector	Parameters related to Advanced magnetic flux vector control (General-purpose magnetic flux control)
Intelligent	Parameters related to the intelligent mode, which sets appropriate parameters automatically and drive the inverter
Calibration	Parameters for calibrating terminals FM and AM and set bias/gain of frequency (speed) setting voltage and current
Option	Parameters related to options
Special running	Parameters related to the special operation that requires parameters to be set before the actual use. Examples of the special operation are communication and programmed operations.

2.8 "Position to Add the Type Information" window

After the editing of parameter data and model information data, select [Save...] on the [File] menu to display the "Position to Add the Type Information" window. Added model will be displayed on the selected position in FR Configurator model list. Select the position for the added model by clicking [Upper] and [Lower]. After selecting the position, click [OK], and save the data.



When creating a new data

No.	Name	Function and Description
A	Adding Inverter Type Editing Inverter Type	Displays the added or edited model.
B	Inverter Type	Displays a models list of FR Configurator. Select the position for the added or edited model in the list.
C	Upper	Moves up the added or edited model.
D	Lower	Moves down the added or edited model.
E	OK	Closes the window with the valid setting.
F	Cancel	Closes the window without the setting.

3 PARAMETER EDITING EXAMPLE

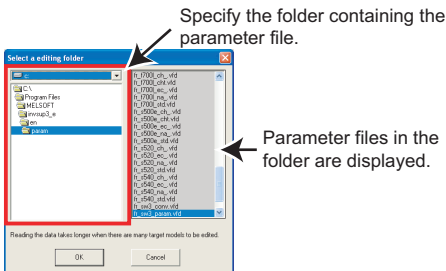
Examples of adding a new model (Refer to page 13), editing/changing an existing model (Refer to page 15), and deleting a registered model from the model list in FR Configurator (Refer to page 17) are shown below. Before editing, make sure to backup the folder containing the parameter file.

(The parameter file is saved in

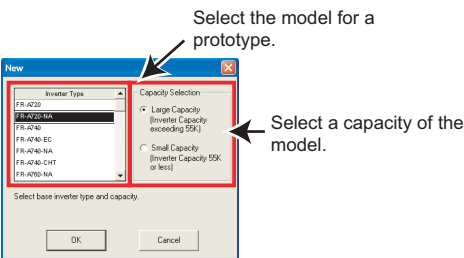
C:\Program Files\MELSOFT\invsup3_e\en\param

if the install destination of FR Configurator is not changed.)

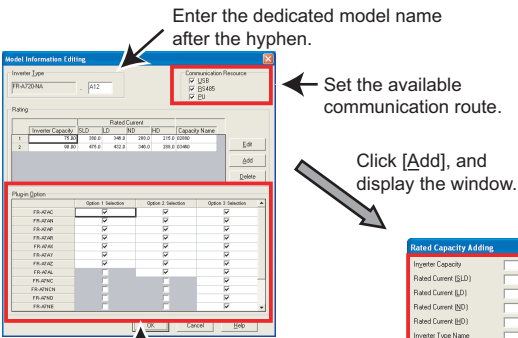
3.1 Adding a new model



- 1) Select [Folder...] from the [File] menu to display the "Select a editing folder" window. Specify the folder containing the parameter file, and click [OK]. (Refer to page 6)

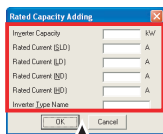


- 2) Select [New] on the [Model] menu to display the "New" window. (Refer to page 7) Select a model and a capacity used as prototypes for the new data.



- 3) Click [OK] in the "New" window to display the "Model Information Editing" window. (Refer to page 9) Add or edit the model name, capacity, rated current, communication resource, and plug-in option settings. To add a capacity, click [Add] and make settings on the "Rated Capacity Adding" window. To edit a capacity, click [Edit] and change settings on the "Rated Capacity Editing" window.

Set the available options.



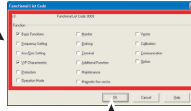
Set the capacity, rated current, and capacity name of the each model.

Adding a new model

Edit parameters

Pr	Name	Value	Unit	Setting Range	Special Value	Function	Warning	AS21
1	Open time	2	1/s	0 to 30/s	0	0000	10	0
2	Minimum frequency	100	2700	0 to 12000	0	0000	10	0
3	Stop frequency	0	2700	0 to 12000	0	0000	10	0
4	Multi-speed setting (high speed)	0	2700	0 to 40000	0	1000	10	0
5	Multi-speed setting (middle speed)	0	2700	0 to 40000	0	1000	10	0
6	Multi-speed setting (low speed)	0	2700	0 to 40000	0	1000	10	0
7	Acceleration time	10	1/s	0 to 30000000	0	0000	10	0
8	Deceleration time	10	1/s	0 to 30000000	0	0000	10	0
9	Electronic thermal cut-off	40	1/s	0 to 600000000	0	0010	10	0
10	DC injection brake operation	3	2700	0 to 120000000	1	0000	10	0
11	DC injection brake operation time	0.05	1/s	0 to 10000000	0	0000	10	0
12	DC injection brake operation voltage	2	1/s	0 to 30/s	0	0000	10	0
13	Start frequency	0.05	2700	0 to 0	0	0000	10	0
14	Load selection	0	Unit base	0 to 5	0	0000	10	0
15	Log frequency	5	2700	0 to 60000	0	0000	10	0
16	Log acceleration/deceleration time	0.5	1/s	0 to 30000000	0	0000	10	0

Select a parameter, and select [Functional List Code] on the [Edit] menu.



Edit the functional list code of the selected parameter.

4) Edit parameters from the main window.

(Refer to page 3 for setting items of parameters.)

To edit the functional list code of each parameter, select [Functional List Code..] on the [Edit] menu, and change settings on the "Functional List Code" window.

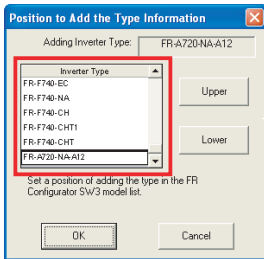
Pr	Name	Value	Unit	Setting Range	Special Value	Function	Warning	AS21
1	Open time	2	1/s	0 to 30/s	0	0000	10	0
2	Minimum frequency	100	2700	0 to 12000	0	0000	10	0
3	Stop frequency	0	2700	0 to 12000	0	0000	10	0
4	Multi-speed setting (high speed)	0	2700	0 to 40000	0	1000	10	0
5	Multi-speed setting (middle speed)	0	2700	0 to 40000	0	1000	10	0
6	Multi-speed setting (low speed)	0	2700	0 to 40000	0	1000	10	0
7	Acceleration time	10	1/s	0 to 30000000	0	0000	10	0
8	Deceleration time	10	1/s	0 to 30000000	0	0000	10	0
9	Electronic thermal cut-off	40	1/s	0 to 600000000	0	0010	10	0
10	DC injection brake operation	3	2700	0 to 120000000	1	0000	10	0
11	DC injection brake operation time	0.05	1/s	0 to 10000000	0	0000	10	0
12	DC injection brake operation voltage	2	1/s	0 to 30/s	0	0000	10	0
13	Start frequency	0.05	2700	0 to 0	0	0000	10	0
14	Load selection	0	Unit base	0 to 5	0	0000	10	0
15	Log frequency	5	2700	0 to 60000	0	0000	10	0
16	Log acceleration/deceleration time	0.5	1/s	0 to 30000000	0	0000	10	0

Click [Parameter Check], and check the edited data.

5) After editing parameters, click [Parameter Check] to sort parameter numbers and check each item for an error.

When a parameter with an error exists, the parameter is displayed in red. Correct the setting for the parameter.

(Refer to page 3)



Select the position of the added model which will be displayed in FR Configurator model list by clicking [Upper] and [Lower], and click [OK].

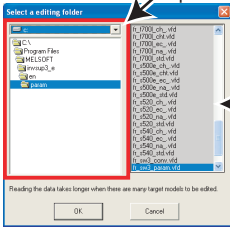
6) After completing the parameter check, display the "Position to Add the Type Information" window by selecting [Save...] on the [File] menu. (Refer to page 12)

Select the position for the added model in FR Configurator model list, and click [OK]. Addition of the new model is completed.

7) The created parameter files can be also used in a different computer by exporting and importing them.

3.2 Editing and changing an existing model

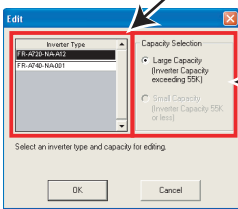
Specify the folder containing the parameter file.



Parameter files in the folder are displayed.

- 1) Select [Folder...] from the [File] menu to display the "Select a editing folder" window. Specify the folder containing the parameter file, and click [OK]. (Refer to page 6)

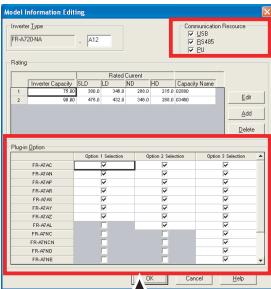
Select the model for edit



Select the capacity of the model

- 2) Select [Edit] on the [Model] menu to display the "Edit" window. (Refer to page 7) Select a model and a capacity to be edited.

Set the available communication route.

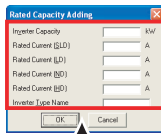


Click [Add] or [Edit] to display the window.

- 3) To add or edit a model capacity, select [Model Info...] on the [Edit] menu to display the "Model Information Editing" window. (Refer to page 9)

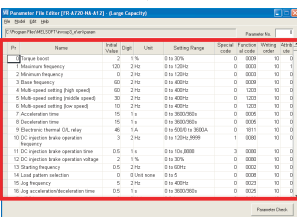
Add or edit the model name, capacity, rated current, communication resource, and plug-in option settings. Click [Add] to add a capacity in the "Rated Capacity Adding" window, or click [Edit] to edit a capacity in the "Rated Capacity Editing" window.

Set the available options.



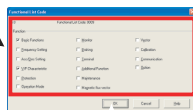
Set the capacity, rated current, and capacity name of the each model.

Edit parameters



Select a parameter, and select [Functional List Code] on the [Edit] menu.

- 4) Edit parameters from the main window. (Refer to page 3 for setting items of parameters.) To edit the functional list code of each parameter, select [Functional List Code...] on the [Edit] menu, and change settings on the "Functional List Code" window.



Edit the functional list code of the selected parameter.

7 Editing and changing an existing model

No.	Name	Min	Max	Unit	Setting Range	Default	Parameter	Setting	Unit
1	Overload	1.5	1.8	%	0.000	0.000	10	0	%
2	Maximum Frequency	120	240	Hz	0 to 120Hz	0	0023	10	Hz
3	Minimum Frequency	0	240	Hz	0 to 240Hz	0	0023	10	Hz
4	Base Frequency	60	240	Hz	0 to 480Hz	0	0009	10	Hz
5	Maximum speed setting (high speed)	60	240	Hz	0 to 480Hz	0	0023	10	Hz
6	Maximum speed setting (middle speed)	30	240	Hz	0 to 480Hz	0	0023	10	Hz
7	Acceleration time	10	14	s	0 to 300.000s	0	0005	10	s
8	Deceleration time	10	14	s	0 to 300.000s	0	0005	10	s
9	Electronic thermal CU value	40	140	%	0 to 200.0 to 300.0%	0	0011	10	%
10	IC motor cooler operation	3	240	Hz	0 to 240.000Hz	1	0000	10	Hz
11	IC motor brake operation time	0.5	14	s	0 to 30.000s	3	0000	10	s
12	IC motor brake operation voltage	3	14	V	0 to 30V	0	0000	10	V
13	Starting frequency	0.5	240	Hz	0 to 480Hz	0	0002	10	Hz
14	Load failure detection	0	240.000	Hz	0 to 0	0	0000	10	Hz
15	Log frequency	5	240	Hz	0 to 480Hz	0	0023	10	Hz
16	Log maximum operation time	0.5	14	s	0 to 300.000s	0	0020	10	s

Click [Parameter Check], and check the edited data.

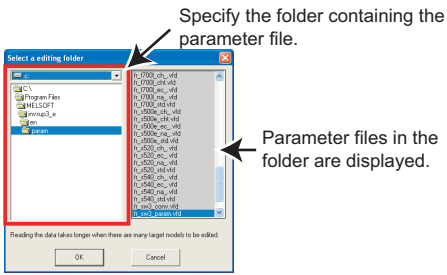
- After editing parameters, click [Parameter Check] to sort parameter numbers and check each item for an error. When a parameter with an error exists, the parameter is displayed in red. Correct the setting for the parameter. (Refer to page 3)

Select the position of the added model which will be displayed in FR Configurator model list by clicking [Upper] and [Lower], and click [OK].

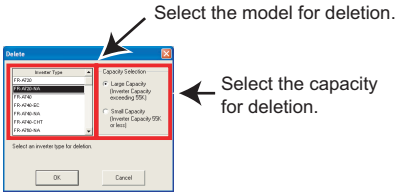
- After completing the parameter check, display the "Position to Add the Type Information" window by selecting [Save...] on the [File] menu. (Refer to page 12) Select the position for the edited model in FR Configurator model list, and click [OK]. Editing of the new model is completed.

- The created parameter files can be also used in a different computer by exporting and importing them.

3.3 Deleting a registered model



- 1) Select [Folder...] from the [File] menu, and display the "Select an editing folder" window. Specify the folder containing the parameter file to be deleted, and click [OK]. (Refer to page 6)



- 2) Select [Delete...] on the [Model] menu, and display the "Delete" window. (Refer to page 7) Select a model and a capacity for deleting.

- 3) Select [Save] from the [File] menu. Deletion of the model is completed.



POINT

- Before deleting the data, make sure to backup the folder containing the parameter file. If a model is deleted by mistake, you can overwrite the parameter file using the backup data.

MEMO

MEMO

REVISIONS

*The manual number is given on the bottom left of the back cover.

Print Date	*Manual Number	Revision
Aug. 2009	IB(NA)-0600405ENG-A	First edition (For Version 1.01)